



Communicator™

Part of SpeechGear's *Compadre™* suite of instant language translation solutions found at www.speechgear.com/store.

Selected as the "Best Retail Product of the Year for Enhancing the Customer's Experience"

Features:

- Complete ready-to-use system that combines SpeechGear's *Interpreter* software with a ruggedized handheld computer and a built-in loud speaker for instant bi-directional translation, anytime, anywhere.
- Speak, type, write or select a phrase using the touchscreen, and with *Communicator* you will both see and hear the translation spoken in the second language.
- Use *PhraseBuilder™* to say exactly what you want – use it to translate over 100,000 words and phrases.
- Full function Windows Mobile computer supports all your applications including Windows Mobile Office, calendars, calculator, contact manager, media player, games, and internet connectivity.
- Intel PXA processor with Windows Mobile OS and 2 USB ports.
- Wi-Fi and Bluetooth connectivity.
- 4" VGA sunlight readable touchscreen.
- Built-in high quality speaker.
- 11 ounces in weight.
- 5.3" x 3" x 1" in size.



SpeechGear

SpeechGear, Inc.
1310 Bollenbacher Drive
Northfield, MN 55057
t: 888.664.9123
f: 775.703.6730
e: info@speechgear.com
w: www.speechgear.com

Instant Spoken Translation of Your Phrases

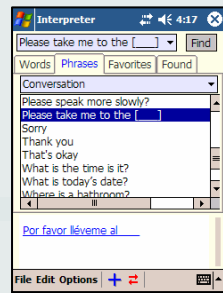
Communicator combines SpeechGear's *Interpreter* software with a ruggedized handheld computer to provide instant spoken translation in a pocket-size system. Simply speak, type, write or use *Communicator*'s touchscreen to select the words or phrases you want to translate. With *Communicator* you both see and hear the translation. It's that simple, instant spoken translation.



Easy to Use

Other systems require you to navigate through multiple menus and scroll through long lists to try to find the phrase you want. *Communicator* makes it easy. *Communicator*'s dictionary and phrases are all part of the same interface. Plus, you can easily create your own Favorites Lists for quick recall of phrases that you frequently use. Want more? *Communicator* remembers the most recent 20 phrases that you've translated, allowing easy reuse. Even more? Use the powerful *Find* features to locate phrases that you want to translate. It all adds up to a powerful, flexible, yet easy-to-use, pocketable system.

Say What You Want to Say in Any Language



With other phrase-based systems, you're limited to whatever phrases some committee decided to include in the product. With *Communicator*, that's not the case. Instead, *Communicator*'s *PhraseBuilder™* technology lets you say exactly what you want to say. With a single click the phrase, *Do you need ___?*, becomes *Do you need some assistance?* or *Do you need Band-Aids?* You can also insert words from *Communicator*'s dictionary directly into your phrases. For example, you can enter a word into the phrase, *Are you allergic to _____*. Further, with *Communicator* you can choose to use audio recorded by a native speaker or have *Communicator* automatically generate the speech.

Add Your Own Words, Phrases and Categories

The *Communicator* system includes our patented *Composer* software that lets you add your own new words, phrases and categories. This gives you the flexibility to rapidly adapt your systems to meet your needs. With *Composer*, you control who can add new vocabulary and when this vocabulary should be distributed to all your platforms. The flexibility is designed into *Communicator* so it adapts to how you want to communicate, instead of the other way around.

Package Options

Communicator comes standard with words and phrases for general conversation (49 categories). Additional packages, such as emergency medical situations (24 categories) and military applications (17 categories) are available, plus SpeechGear will work with you to create a vocabulary specific to your pharmacy's needs and show you how you can use *Composer* to continually update your systems yourselves, anytime, and anywhere.

Try it today !!!

Communicator is part of SpeechGear's entire suite of instant translation products. To learn more about these products and configure a system for your communication needs, send an email to info@speechgear.com or give us a call at 888-664-9123. We're looking forward to configuring an instant translation system specifically for your needs.